



# Drive Recorder

- User Manual -

08E30-PY8-7000-80	OM.DRIVE RECORDER
-------------------	-------------------



Please read the user manual carefully before use.

Thank you very much for using the Honda Drive Recorder (DVR).

Please read this manual carefully before use.

If you are unsure how to use this drive recorder or have questions about after-sales service, please contact your Honda dealer.

The images in this user manual may differ somewhat from the actual product. Please refer to the actual product.

## Table of Contents

### Introduction

1.Safety Precautions.....	01
---------------------------	----

### Instructions

1.Product Introduction.....	02-07
• Drive Recorder Specifications.....	02
• SD Card Recording Specifications.....	03
• Appearance.....	03
• Physical Button Introduction.....	04
• LED Indicator Introduction.....	05-06
• Operation.....	06-07
2.Smartphone Interaction.....	08-17
• Download the APP.....	08
• Connect to Wi-Fi.....	09-10
• Camera View.....	11
• Camera Setting.....	12-14
• Format SD card.....	15
• Camera Files.....	16-17
3.Browse Information.....	18-19
• Download the Videos & photos.....	18
• Album.....	19
4.Troubleshooting.....	20-21
5.Supported Phone List.....	22-23

## Safety Precautions

### Warning

- Do not operate the device while driving. Before operating the Drive Recorder, be sure to park the vehicle in a safe location.
- Do not stare at the phone screen while driving, as this may cause you to ignore the road conditions and lead to a traffic accident.
- Do not disassemble and/or modify this device, as this may result in accidents, fire, or electric shock.
- If you notice any abnormalities such as unidentified objects, water, smoke, unusual odors, etc., stop using the device immediately and contact your Honda dealer. Continuing to use may lead to accidents, fire, or electric shock.
- Before inserting or removing the memory card, ensure that the Drive Recorder is completely powered off and the LED indicator is off, otherwise, it may cause damage to the SD card.
- When inserting or removing the SD card, be careful to prevent the memory card from popping out unexpectedly.
- When inserting the memory card, ensure the direction of the metal contacts is correct, otherwise, it may damage the card slot.
- Do not apply pressure to the device, as this may cause malfunction.
- Do not insert or remove the memory card during recording, as this will corrupt the current video file.

## Product Introduction

### ■ Drive Recorder Specifications

Resolution	FR: Full HD (1920x1080) RR: Full HD (1920x1080)
FR View Angle	Horizontal angle: 115° x Vertical angle: 58~64°
RR View Angle	Horizontal angle: 111° x Vertical angle: 57~62°
Video format	MP4
Photo format	JPG
Wi-Fi	2.4G (802. 11 b / g / n)
Real Time Clock	Supported
Power Supply	9 ~ 16V
Operating Current	300mA ± 50mA
Dark Current	< 1mA
HDR	Supported
Storage Temperature	- 40° ~ + 85°C
Operating Temperature	- 30° ~ + 75°C
G-sensor	High, Medium, Low
Loop Recording	1 minute / 2 minutes / 3 minutes
Manual Recording	Manual Lock , Supported
Photo Saving	Supported
Voice Recording	Supported
Mobile Phone Application	H-DVR Viewer
SD card - Speed class	Class 10 (minimum speed: 10 MB/s)
Supported Mobile OS version	iOS 10.0 or later / Android 6.0 or later

Product Introduction

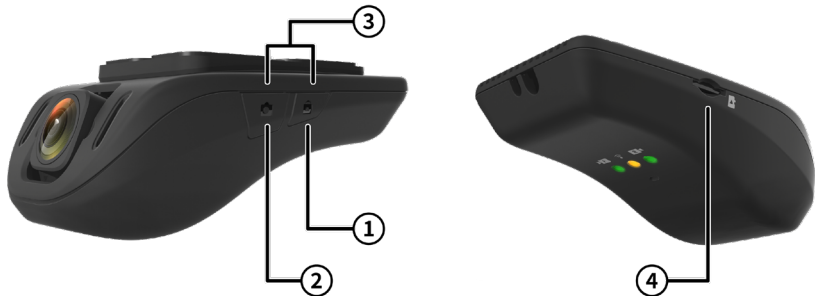
SD Card Recording Specifications

Micro SD Capacity	Supports 32GB~128GB Micro SD card (64GB SD card is included with the purchase of the DVR, so the following calculation is based on 64GB capacity)
Loop Recording (1 Camera)	Supports recording of up to 808 minutes.
Loop Recording (2 Camera)	Supports recording of up to 488 Minutes.
Manual Snapshot	Supports a maximum of 142,360 files.
Collision event recording (including Manual File Protect)	Supports recording of up to 682 Minutes.
Parking monitoring	Supports recording of up to 294 Minutes. <sup>※1</sup>

※1 : In parking monitoring mode (During Power OFF until ON), a maximum of 10 files can be recorded.

Note : Actual files recording is depend on actual SD card capacity.

Appearance



Product Introduction

Physical Button Introduction

NO.	Function icon	Function name	Function
1		Manual File Protect Key	Short press (LED Light - flashes twice): Manual File Protect
2		Snapshot Key / DVR Reset Key	Short press (LED Light - flashes twice): Snapshot Capture Long press (8 seconds): Reset DVR
3		Factory reset Key	Long press both keys (8 seconds): Factory reset (All data in SD card will be lost)
4		SD Card	SD card insertion direction reminder <sup>※2</sup>

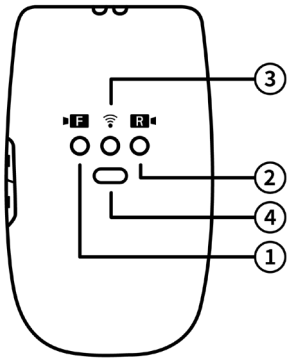
※2 : Please note the insertion direction of the SD card. Insert with the metal contacts facing down. Incorrect insertion may cause damage to the SD card (refer to the image below).

- To eject the SD card, please press it in and then release it to allow the SD card to pop out of the slot.
- For your driving safety, please insert or remove the SD card after the vehicle engine / power is turned off.



Product Introduction

■ LED Indicator Introduction



NO.	Function icon	Function name	Function
1		LED Indicator : Green Light Front Camera	Loop recording : Solid on Abnormal case : Flashing <sup>※3</sup> Manual file protection / DVR reset / Factory reset / Collision event
2		LED Indicator : Green Light Rear Camera	recording, Parking monitoring recording : Flashing No SD card : Flashing
3		LED Indicator : Amber Wi-Fi connection status	Wi-Fi connected : Solid on Wi-Fi not connected : Off DVR reset / Factory reset : Flashing
4		Microphone hole	Audio Input

Product Introduction

※3: If the F indicator light is flashing, it may be due to no SD card inserted, SD card damage, abnormal cable connection, etc.  
Please check the SD card status first. If recording is still abnormal, please return to the Honda dealer for inspection.

■ Operations

**Start Loop Recording :**

The camera operates automatically in sync with the vehicle's power/engine. It will begin recording video when the engine/power is turned on. The LED indicator (green) will light up.

**Stop Loop Recording :**

The camera will continue recording during driving and will automatically stop when the engine/power is turned off.

**Manual File Protect :**

You can operate to lock the current recording file by pressing 'Manual File Protect' button, then the video will be moved to "Locked" folder.

**Snapshot :**

You can capture the photo by pressing 'Snapshot' button, then the photo will be saved to "Snapshot" folder.

## Product Introduction

### Collision Event Recording Mode :

In the event of a collision or sudden impact while driving, the camera will trigger automatic emergency recording. The footage will be saved in the "Locked" folder to prevent it from being overwritten.

You can adjust the camera's sensitivity based on your driving behavior. For more details, please refer to the Settings section.

### Parking Monitoring Mode :

When the engine/power is turned off, the camera enters standby mode. If any impact or vibrate is detected on the vehicle or camera, it will automatically start recording.

You can adjust the camera's sensitivity based on your driving behavior. For more details, please refer to the Settings section.

\* Video files are saved to the SD card. When the SD card is full, the camera will automatically overwrite the oldest files using a loop recording system. Even the locked and Parking folder also use the loop recording system when their allocated storage is full.

To avoid losing important videos, please download and save any critical videos to your mobile device before they may be overwritten.

## Smartphone Interaction

### ■ Download the APP

Download the app "H-DVR Viewer" according to your phone's operating system.

iOS : App Store

Android : Google Play Store



H-DVR Viewer

- Scan the QR code on this page to download and install.

iOS :

Android :

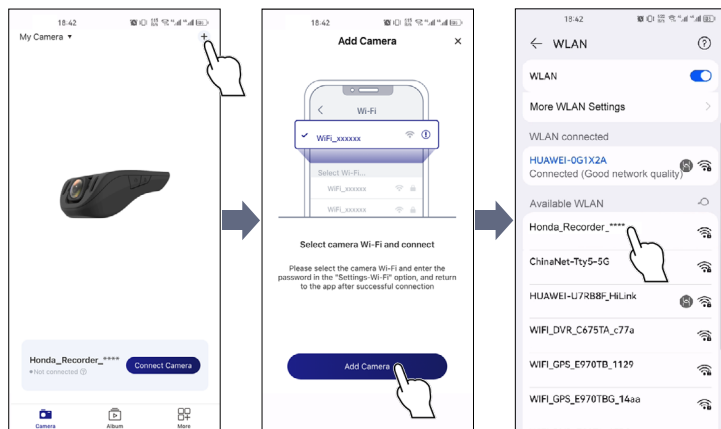


- Download and installation.
  - ① Tap "App Store" application on your iPhone.
  - ② Tap the "Google Play Store" application on your Android phone.
  - ③ Enter "H-DVR Viewer" in the search bar.

## Smartphone Interaction

## ■ Connect to the Wi-Fi

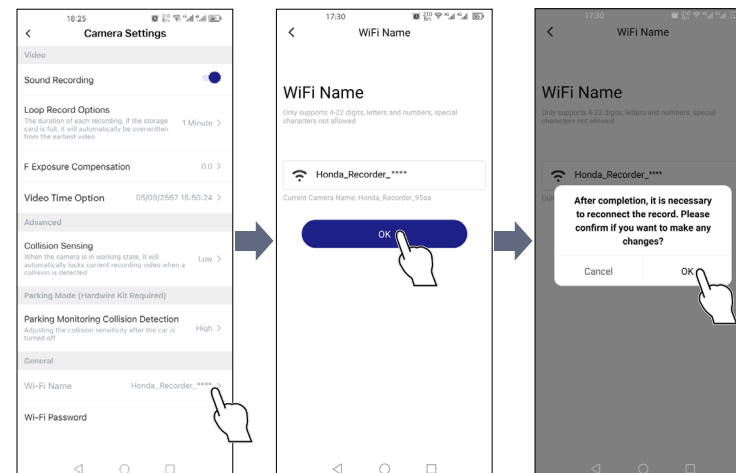
- Open the APP and connect to the DVR's Wi-Fi.
- Search for the Wi-Fi name: Honda\_Recorder\_\*\*\*\*
- For the first connection tap + to add your camera, the password will be required, please enter the default password : 12345678  
(You can go to the settings page to change the password)



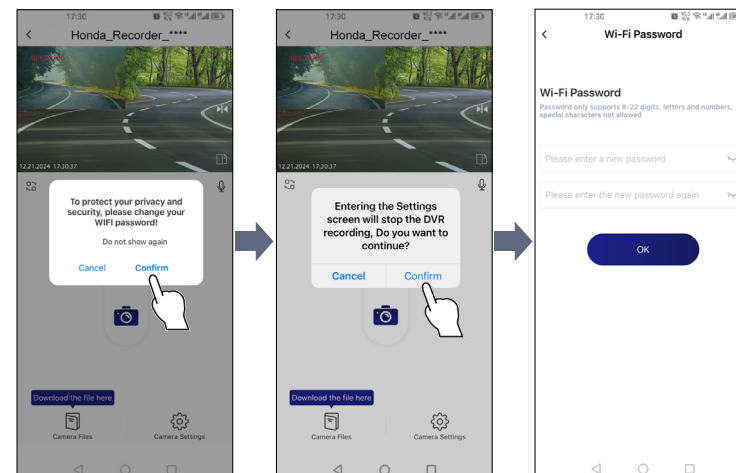
- Note :
1. The password must contain uppercase letters, lowercase letters, and numbers.
  2. The new password cannot be the same as the previous one.
  3. If you forget your self-defined password, you can perform a factory reset to restore it to the default value for operation.
  4. The DVR can connect to one mobile phone at a time.
  5. Wi-Fi signal works within 3 meters range without obstruction.

## Smartphone Interaction

## • Change Wi-Fi name.

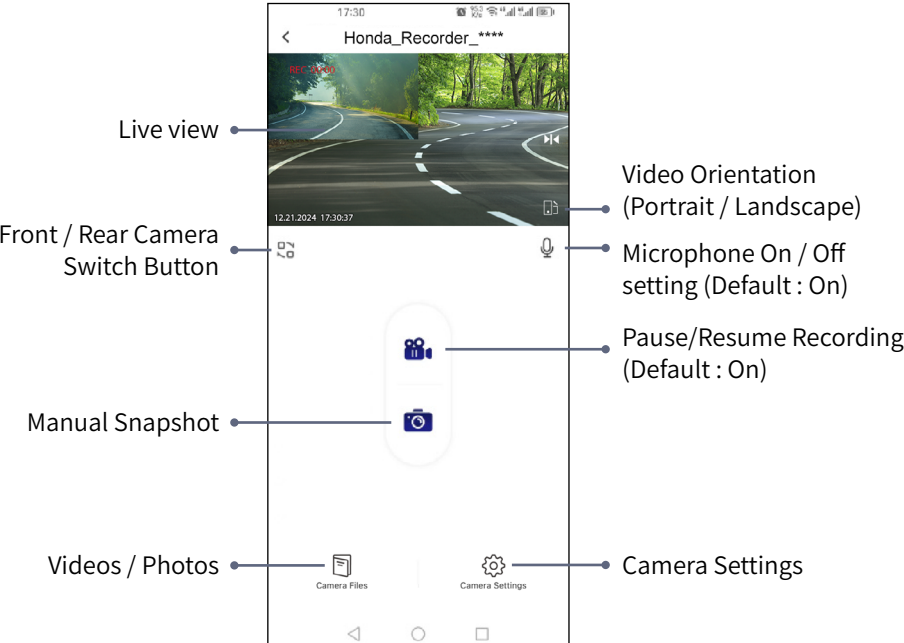


- Upon the first login to the application, a reminder window will pop up, informing you to change the password.  
You chooses to confirm, you can enter the password modification page to set it.  
If you chooses to cancel, the reminder will still appear the next time they enter the application.



Smartphone Interaction

■ Camera View



- **Pause / Resume Recording :**  
You can tap the Pause icon to temporarily stop recording. The camera will resume recording when you tap the Resume icon or exit the application.  
\*It is recommended not to pause recording while the vehicle is moving, as this may result in missing video recording in the event of a collision.

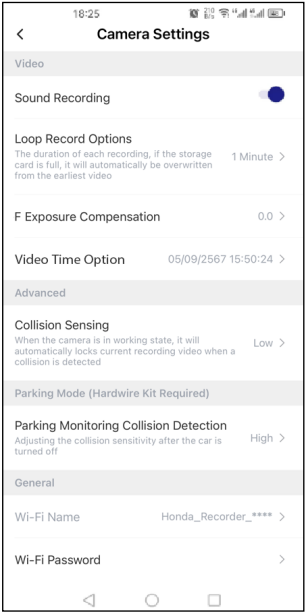


- **Microphone On / Off Setting :**  
You can turn the microphone On or Off from both the Main Screen and Settings. The selected microphone setting will apply to all recording functions and will remain unchanged even after exiting the application.



Smartphone Interaction

■ Camera Settings



NO.	Item	Setting values (marked * as default)	Explanation
1	Sound Recording	• ON * • OFF	Indicates whether sound is recorded in the playback video
2	Loop Record Options	• 1 minute* • 2 minutes • 3 minutes	Length of one recording file
3	Exposure Compensation	• -2 • 0 * • +2	Video recording brightness effect



## Smartphone Interaction

NO.	Item	Setting values (marked * as default)	Explanation
4	Time Stamp	<ul style="list-style-type: none"> <li>• 2024/09/05 15:50:24</li> <li>• 9/5/2024 3:50:24 PM</li> <li>• 05.09.2024 15:50:24</li> <li>• 05.09.2567 15:50:24</li> <li>• 05/09/2567 15:50:24 *</li> </ul>	<p>Date/Time Format: Can be adjusted according to your viewing preference.</p> <p>The format is the same as the timestamp at the bottom of the video.</p>
5	Collision Sensing (for Collision event recording mode)	<ul style="list-style-type: none"> <li>• Off</li> <li>• High</li> <li>• Medium</li> <li>• Low *</li> </ul>	<p>Indicates the sensitivity level for collision detection that will trigger automatic recording on impact while driving.</p> <p>High: Triggers with light impact Medium: Triggers with moderate impact Low: Triggers with high impact Off: Disables this function</p> <p>Adjust to your driving habits.</p>

## Smartphone Interaction

NO.	Item	Setting values (marked * as default)	Explanation
6	Collision Sensing (for Parking monitoring collision detection mode)	<ul style="list-style-type: none"> <li>• Off</li> <li>• High *</li> <li>• Medium</li> <li>• Low</li> </ul>	<p>Indicates the sensitivity level for collision detection that will trigger automatic recording on impact while parking.</p> <p>High: Triggers with light impact Medium: Triggers with moderate impact Low: Triggers with high impact Off : Disables this function</p> <p>Adjust to your driving habits.</p>
7	Wi-Fi Password Change	<ul style="list-style-type: none"> <li>• 12345678 *</li> <li>• Self-defined password</li> </ul>	It is recommended to change the Wi-Fi password to a self-defined password after the first login.

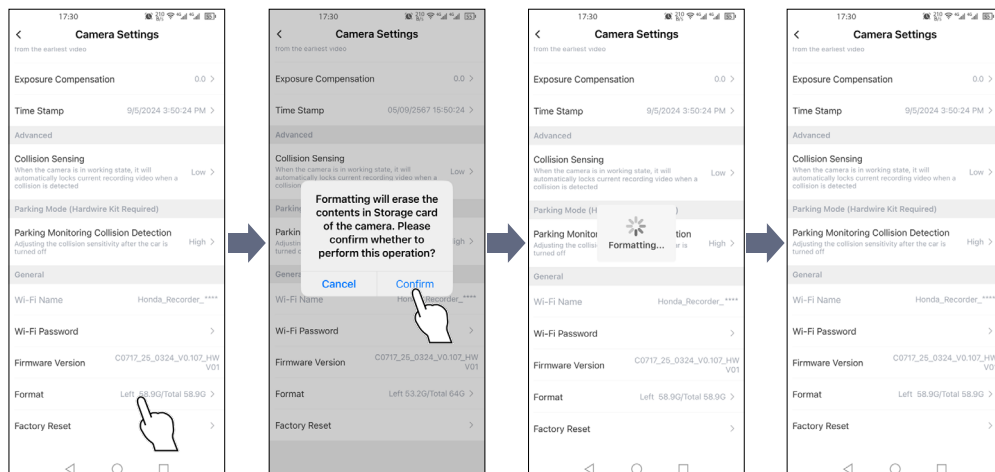
## Smartphone Interaction

## ■ Format SD card

For initial use, please format the new SD card through the APP to enable recording.

If you replaces the SD card, it must be formatted via the app before it can be used for the first time.

If an unformatted SD card is inserted, the front camera LED will flash until the formatting is complete.



- Note : 1. It is recommended to format the SD card every three months to ensure smoother read and write performance.
2. To avoid recording issues, please format the SD card using the mobile app.

## Smartphone Interaction

## ■ Camera Files

The recorded videos are saved to the SD card. You can browse the videos using the application or by removing the SD card and accessing it via a computer. To browse through the files on the app, tap the 'Camera files' button. You can then select from the categorized folders to view your videos.

**Folder Classifications :**

Loop → Loop recording

Snapshot → Captured snapshots

Locked → Collision event recordings & Manual File Protect

Parking → Parking monitoring recordings

- \* Each folder is allocated a specific portion of the SD card's capacity. Once the folder reaches its limit, the oldest files will be automatically overwritten without any warning. To avoid losing important videos, it is recommended to regularly back up or organize your video and photo files.



## Smartphone Interaction

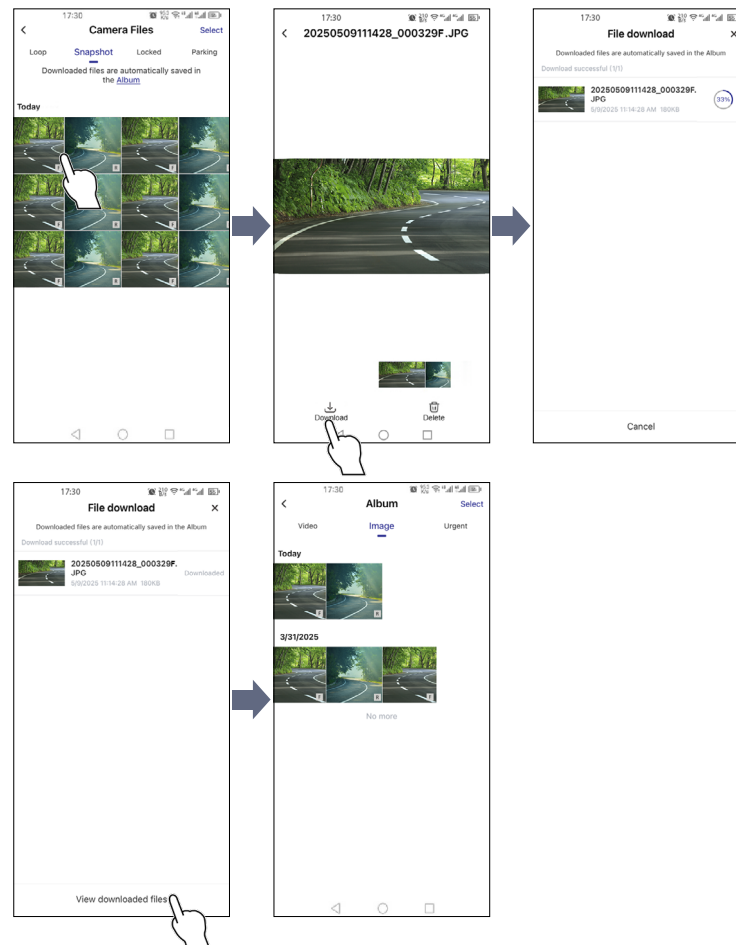


※ Videos and photos are marked to indicate whether they were taken by the front or rear camera. ("F" for front camera, "R" for rear camera)

## Browse Information

### Download the Videos & photos

You can download videos from SD card to your mobile phone. Select the videos and tap 'Download' button.  
The downloaded files will be saved to the app's album.



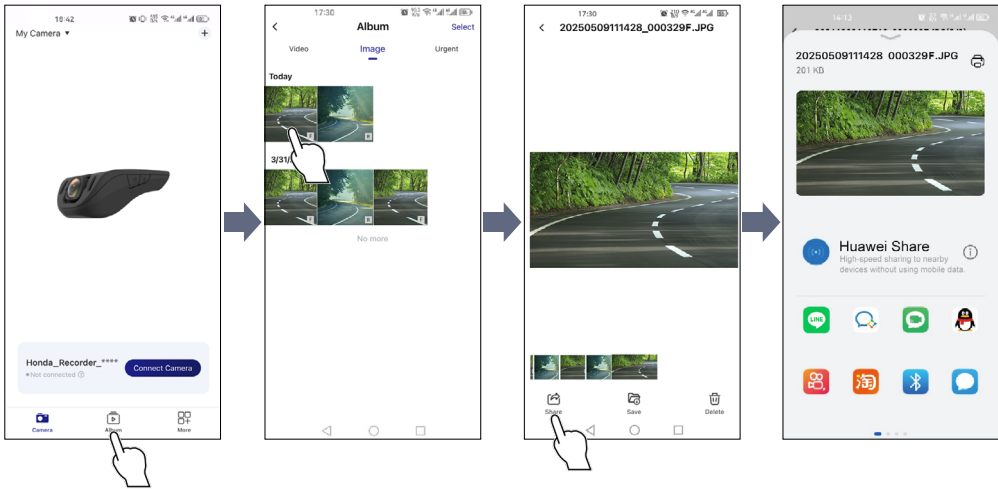
Browse Information

Album

The Album section stores the videos and photos saved in the app's storage area on your phone.

You can tap 'Album' button to view and manage your downloaded Videos.


- Share : Share the videos with other applications.
- Save : Save the selected videos to your phone's local gallery/storage. (outside of the app)
- Delete : Delete selected file from the album.



Troubleshooting

Problem	Possible causes	Solution
File cannot be saved (Front camera indicator flashing)	<ul style="list-style-type: none"><li>• SD card not inserted</li><li>• SD card damaged</li><li>• Incorrect SD card format or size</li></ul>	<ul style="list-style-type: none"><li>• Please check if an SD card is inserted into the Drive Recorder main unit.</li><li>• Format the SD card (All data in SD card will be lost)</li><li>• Replace the new SD card</li><li>• Check the SD card capacity is 128GB or lower.</li><li>• Please go to a nearby dealer for confirmation.</li></ul>
The time displayed at the bottom of the video is incorrect.	<ul style="list-style-type: none"><li>• The time is not synchronized because the vehicle battery was disconnected for an extended period.</li></ul>	<ul style="list-style-type: none"><li>• Please log in to the app and connected to camera, the time will be automatically synchronize. it will effect to new recorded videos.</li></ul>
No LED lights are on.	<ul style="list-style-type: none"><li>• DVR cannot be turned on.</li></ul>	<ul style="list-style-type: none"><li>• Please go to a nearby dealer for confirmation.</li></ul>
The video has no sound.	<ul style="list-style-type: none"><li>• Microphone function is off.</li></ul>	<ul style="list-style-type: none"><li>• Please go to the app to check if the microphone function is turned on.</li></ul>
Forgot Wi-Fi password	<ul style="list-style-type: none"><li>• User modified the password and then forgot it.</li></ul>	<ul style="list-style-type: none"><li>• Press and hold the two physical buttons on the DVR main unit for 8 seconds to perform a factory reset and return to the initial state for operation. <b>Note</b> : If you restore the factory settings, all data on the SD card will lost.</li></ul>

## Troubleshooting

Problem	Possible causes	Solution
Cannot connect Wi-Fi or Connection fail	<ul style="list-style-type: none"> <li>DVR not found during search.</li> <li>Wi-Fi module malfunction</li> </ul>	<ul style="list-style-type: none"> <li>Please try restarting the DVR main unit. Press and hold the Snapshot key on the main unit for 8 seconds to restart the unit.</li> </ul> 
The recorded video is blurry	<ul style="list-style-type: none"> <li>Please check if there is any dirt or foreign objects on the front and rear windshields.</li> </ul>	<ul style="list-style-type: none"> <li>Please perform cleaning.</li> </ul>

## Supported Phone List

Brand	Model
Apple	iPhone 5s
	iPhone 6
	iPhone 6 Plus
	iPhone 6s
	iPhone 6s Plus
	iPhone SE (First-generation)
	iPhone 7
	iPhone 7 Plus
	iPhone 8
	iPhone 8 Plus
	iPhone X
	iPhone XR
	iPhone XS
	iPhone XS Max
	iPhone 11 Series
	iPhone SE (Second-generation)
	iPhone 12 Series
	iPhone 13 Series
	iPhone 14 Series
	iPhone 15 Series
	iPhone 16 Series

## Supported Phone List

Brand	Model
Samsung	Galaxy S7/S7 Edge
	Galaxy S8/S8+
	Galaxy S9/S9+
	Galaxy Note 8
	Galaxy Note 9
	Galaxy S20 Series
	Galaxy S21 Series
Google	Pixel Series
OnePlus	OnePlus 3/3T
	OnePlus 5/5T
LG	LG G6
Motorola	Moto G5/G5 Plus
Huawei	Mate 10 Series
	P20 Series
	P30 Series
Xiaomi	Xiaomi 6
	Xiaomi 8 Series
OPPO	OPPO R11/R11s
Vivo	Vivo X21/X23
ZTE	Axon 9 Pro

- ※ Compatible with iOS version 10.0 or later and Android version 6.0 or later
- ※ Newly released phones on the market may not be on the list. Please refer to the phone's operating system version.



เครื่องวิทยุคมนาคมนี้ ได้รับยกเว้น ไม่ต้องได้รับใบอนุญาตให้มี ใช้ซึ่งเครื่องวิทยุคมนาคม หรือตั้งสถานีวิทยุคมนาคมตามประกาศ กสทช. เรื่อง เครื่องวิทยุคมนาคม และสถานีวิทยุคมนาคมที่ได้รับยกเว้นไม่ต้องได้รับใบอนุญาตวิทยุคมนาคมตามพระราชบัญญัติวิทยุคมนาคม พ.ศ. 2498



**nab.** | โทรคมนาคม  
กำกับดูแลเพื่อประชาชน  
Call Center 1200 (InswS)



52176400001-00