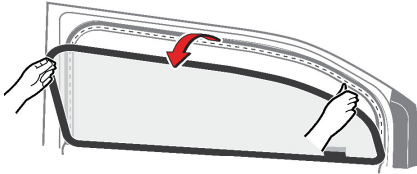
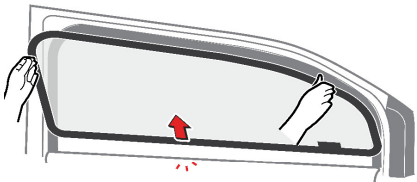


## REMOVING

1. Open the right rear door.
2. Pull the top frame of the sunshade out from the door frame.



3. Take out the bottom section of the sunshade from the door panel.

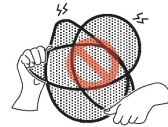


4. Repeat step 1 through 3 for the left rear door.



## ADVICE

- Removing the sunshade, should hold and pull the frame of the sunshades. Do not pull the mesh of the sunshade, it may damage the sunshade.
- After removed the sunshade, store the sunshade in the bag.
- Avoid folding sunshade to prevent damage to the embedded magnet.



- Avoid falling the sunshade on rough surface and beware of sharp objects to prevent damage the sunshade material.

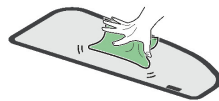


- Avoid to clean the sunshade with water or any detergent directly.



## INFORMATION

Use damp cloth to wipe clean the sunshade.



# REAR DOOR SUNSHADES

## OWNER'S MANUAL

**Thank you for purchasing this Honda accessory. Please read this Owner's Manual carefully before using this accessory, and keep this manual in the glove box for future reference.**

- This product is designed to be used exclusively on Honda cars. Honda is not responsible if the unit is used for any other intended purpose.
- The Owner's Manual should be considered a permanent part of your vehicle. It should remain with the vehicle at all times and stay with the vehicle if it is sold.

## SPECIAL MESSAGES

- We provide many important safety messages in this manual. For your safety and safety of others, pay special attention to all warnings preceded by this alert symbol ⚠. Failure to follow the warnings contained in this manual can result in serious injury or accident.

### ⚠ DANGER

- Indicates that severe personal injury or death will result if instructions are not followed.

### ⚠ WARNING

- Indicates a strong possibility that serious injury or death may result if instructions are not followed.

### ⚠ CAUTION

- Indicates a possibility that personal injury may result if instructions are not followed.

## OTHER SYMBOLS

- If instructions are preceded by the following symbols, they will give helpful advice or information.

### 🛠 ADVICE

- Gives advice to prevent damage to the product.
- Gives advice to handle emergency situation.

### 📖 INFORMATION

Gives helpful information or instructions to be followed in using the product.

## Rear Door Sunshades Kit

- Sunshades (2)

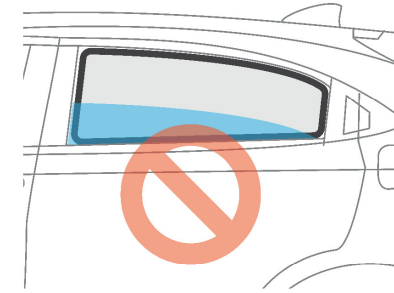


- Bag



### ⚠ CAUTION

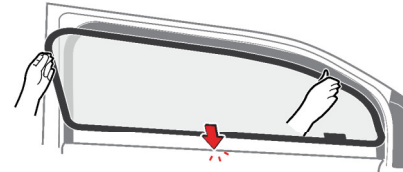
- Do not lower front and rear glass when using the rear door sunshade.



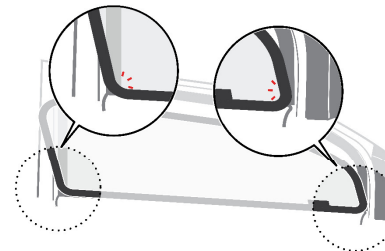
- Sunshade must not be used during the hours of darkness or low visibility.

## INSTALLATION

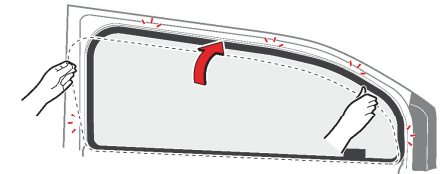
1. Open the right rear door.
2. Put the bottom section of the sunshade to the door panel.



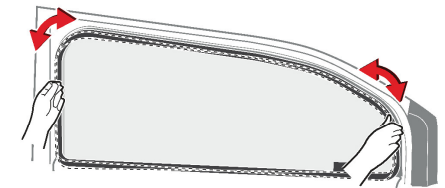
3. Position the bottom corners of the sunshade to the window corners.



4. Snap the top frame of the sunshade to the door frame.



5. Once the sunshade is in position. Adjust the sunshade from the 2 sides for a better fitment.



6. Repeat step 1 through 5 for the left rear door.