




WIRELESS CHARGER

OWNER'S MANUAL

Thank you for purchasing this Honda accessory. Please read this Owner's Manual carefully before using this accessory, and keep this manual in the glove box for future reference.

- **This product is designed to be used exclusively on Honda cars. Honda is not responsible if the unit is used for any other intended purpose.**
- **The Owner's Manual should be considered a permanent part of your vehicle. It should remain with the vehicle at all times and stay with the vehicle if it is sold.**

SPECIAL MESSAGES

- We provide many important safety messages in this manual. For your safety and safety of others, pay special attention to all warnings preceded by this alert symbol . Failure to follow the warnings contained in this manual can result in serious injury or accident.

DANGER

- Indicates that severe personal injury or death will result if instructions are not followed.

WARNING

- Indicates a strong possibility that serious injury or death may result if instructions are not followed.

CAUTION

- Indicates a possibility that personal injury may result if instructions are not followed.

OTHER SYMBOLS

- If instructions are preceded by the following symbols, they will give helpful advice or information.



ADVICE

- Gives advice to prevent damage to the product.
- Gives advice to handle emergency situation.



INFORMATION

Gives helpful information or instructions to be followed in using the product.

SAFETY PRECAUTIONS

CAUTION

Metal objects between the wireless charger pad and the device to be charged will get hot and can burn you.

- Always remove foreign objects from the wireless charger pad before charging the device.
- Be sure the surface is clear of dust and other debris before charging.
- Do not spill liquids (i. e. water, drinks, etc.) on the wireless charger and the device.
- Do not use oil, grease, alcohol, benzine or thinner for cleaning the wireless charger pad.
- Do not cover the system with towels, clothing, or other objects while charging etc.
- Avoid spraying aerosols which may come in contact with the wireless charger pad surface.



ADVICE

Do not place any magnetic recording media or precision machines within the charging area while charging. The data on your cards such as credit cards can be lost because of the magnetic effect. Also, precision machines such as watches can be affected.



INFORMATION

In order to use safely:

- Remove any metal objects from the wireless charger pad before charging a device.
- Do not open the wireless charger case.
- Do not use the wireless charger if it malfunctions. Contact your dealer.

This system consumes a lot of power. Do not use the system for a long time when the engine is not running. This may weaken the battery, making it difficult to start the engine.

When using the wireless charger, check the user's manual that came with the compatible device you want to charge.

The wireless charger can support up to 15W, but the charging rate varies based on the device and other conditions.

“Qi” and  marks are the registered trademarks owned by Wireless Power Consortium (WPC).

In the following cases, charging may stop or not start:

- The device is already fully charged.
- The temperature of the device is extremely high while charging.
- You are at a place that emits strong electromagnetic waves or noises, such as a TV station, electric power plant, or gas station.
- The device has a cover, case or accessories which are not compatible with wireless charging.

A device may not charge if the size or shape of its chargeable side is not appropriate for use with the charging area.

Not all devices are compatible with the system.

Burn risk:

Any metal objects placed between the wireless charger pad and the device may become hot.

During the charging phase, it is normal for the charging area and device to heat up.

Charging may be briefly interrupted when:

- All the doors and the boot are closed- to avoid interference with the proper functioning of the keyless access system.
- The position of the device is altered.


Do not charge more than one device at a time on a charging area.

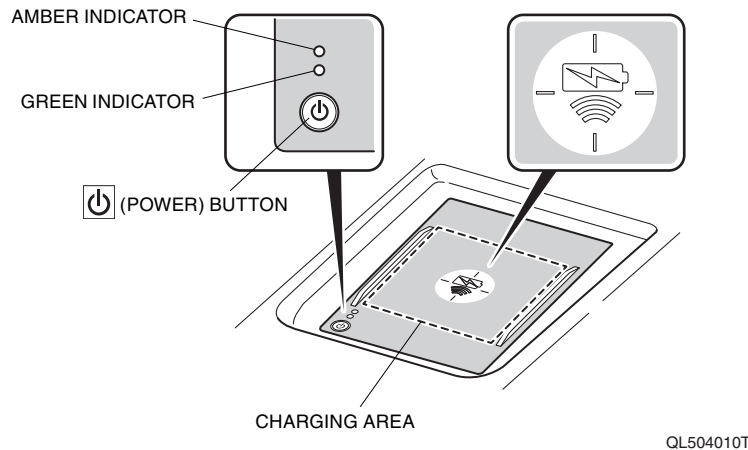
If the device becomes too hot and its battery protection function activates, it may charge extremely slowly or no longer charge.


The temperature at which the battery protection function activates depends on the device.

HOW TO OPERATE THE WIRELESS CHARGER

To use the wireless charger, the power mode must be in ACCESSORY or ON.

Charge any devices compatible with Qi wireless charging on the area indicated by the  mark as follows.



1. To turn the system on and off, press and hold the  (power) button.
 - When the system is activated, the green indicator light comes on.
2. Place the device you want to charge on the charging area.
 - The system will automatically start charging the device, and the amber indicator light will come on.
 - Make sure that the device is compatible with the system and placed with the chargeable side in the center of the charging area.
3. When charging is completed, the green indicator light will come on.
 - Depending on the device, the amber indicator light will stay on.

When radio noise is generated

While the wireless charger is on, press the power button once and radio noise could be reduced by changing charging frequency.

- The amber indicator blinks three times.
- Before changing charging frequency, turn the wireless charger off once and confirm radio noise is reduced.




INFORMATION

If the wireless charger interferes with radio communications, attempt to correct the interference:

- Press and hold the power button on the wireless charger for a few seconds to turn off the wireless charger.

When charging does not start

Perform one of the solutions in the following table.

Indicator		Cause	Solution
Green & Amber	Blinking simultaneously	There is an obstacle(s) between the charging area and the device.	Remove the obstacle(s).
		The device is not within the charging area.	Pick up and reset the device to the center of the charging area where is  located.
		The temperature of the wireless charger pad increases.	Temporarily suspend charging the device. Wait for the temperature to drop and attempt to charge the device again.
Amber	Blinking	The wireless charger is faulty.	Contact a dealer for repairs.